



Mrs. McCreddie – English 8

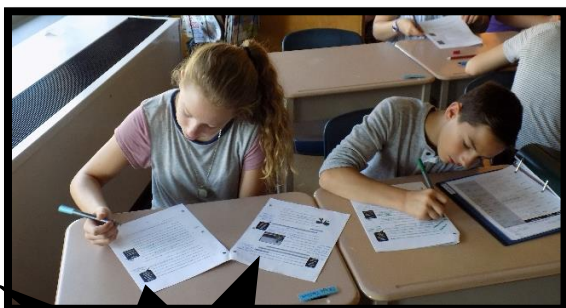
cmccreadie@lowvilleacademy.org

www.courtneymccreadie.com

315-376-9010 Ext: 2217



“Educating the mind without educating the heart is no education at all.” - Aristotle



## Course Description & Policies

English 8 is a 60 minute blocked class period where students engage in a variety of activities within creatively and rigorously designed thematic-based units. Students in English 8 will continue to develop and enhance their reading, writing, vocabulary, and analytical thinking skills while preparing for the NYS ELA state test, practice and cultivate skills necessary for high school, develop their voice as a writer, and most importantly – connect and increase their awareness of the world during the exploration of reading and writing.

### Materials

- 1.5" binder
- 5 dividers for binder
- 1 single-subject notebook
- Loose-leaf paper
- Pencils and blue/black pens

### Grading

Assessments	25%
Writing & Projects	25%
Independent Practice	25%
Outside Reading	15%
Readiness	10%

### ABSENCE POLICY

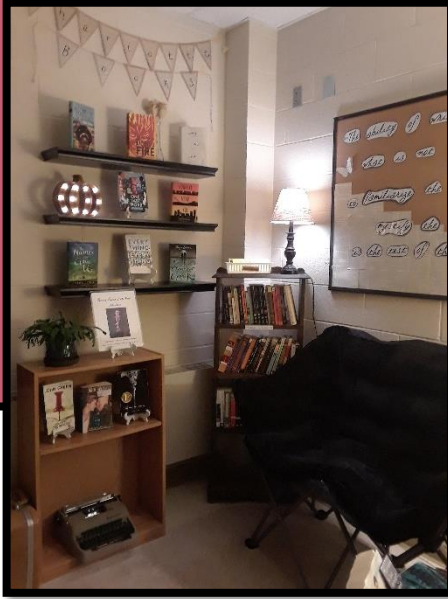
When you are absent, it is your responsibility to see me the day you return to school. Make a plan to make up and turn in missed assignments. Assignments that were due the day you were absent, however, are expected to be turned in when you return to school.

### CORRECTIONS POLICY

Students may make corrections to any assignment, except projects. See the corrections policy sheet (handed out in class) for specific directions.

### LATE WORK POLICY

Assignments turned in late will affect the 'Readiness' category in average. The total number of late assignments ÷ the total number of assignments = 'Readiness' average.



“The ability of writers to imagine what is not the self, to familiarize the strange and mystify the familiar, is the test of their power.”

-Toni Morrison



## Classroom Expectations



	Be Responsible.	Be Respectful.	Be Safe.
Before class begins	<ul style="list-style-type: none"> <li>Bring all required materials to class.</li> <li>Be in your seat before the second bell rings completing your “Daily”.</li> <li>Make sure your Chromebook is charged.</li> </ul>	<ul style="list-style-type: none"> <li>Use appropriate language and volume when speaking to your teacher and your peers.</li> <li>Keep your Chromebook <u>completely</u> closed unless directed otherwise.</li> </ul>	<ul style="list-style-type: none"> <li>Avoid blocking the doorway or other students’ desks.</li> <li>Keep the materials you don’t need inside your desk; be mindful of others’ space.</li> </ul>
During class	<ul style="list-style-type: none"> <li>Complete tasks to the best of your ability.</li> <li>Keep materials organized in your binder.</li> <li>Participate actively.</li> <li>Raise your hand.</li> <li>Use your Chromebook to access ELA content <u>only</u>.</li> </ul>	<ul style="list-style-type: none"> <li>Listen to all instructions carefully.</li> <li>Use work time diligently and avoid distracting others.</li> <li>During class discussion, listen attentively to teacher <u>and</u> peers, and wait your turn to respond.</li> <li>Ask before using or taking something that does not belong to you.</li> <li>Wait to pack up your materials until directed by the teacher.</li> </ul>	<ul style="list-style-type: none"> <li>Stay in your seat during work or instructional time.</li> <li>Keep hands, feet, and other personal property to yourself at all times.</li> </ul>
Once class ends	<ul style="list-style-type: none"> <li>Turn in materials to Drop Box or as directed by teacher.</li> <li>Organize your personal materials.</li> </ul>	<ul style="list-style-type: none"> <li>Leave with a positive attitude.</li> </ul>	<ul style="list-style-type: none"> <li>Push your chair in and align the desk.</li> <li>Put your Chromebook in your case.</li> <li>Avoid a traffic jam at the door.</li> </ul>

### Meanings of abbreviations on School Tool:

**C** = Corrected Assignment – grade has been updated to reflect corrections

**L** = Late Assignment - needs to be turned in ASAP

**E** = Exempt – is not required to complete this assignment

**A** = Absent – no late points have been deducted, unless student fails to turn in assignment in a timely manner after return from absence

**R** = Needs to Redo Assignment

*Classroom consequences are based on frequency and severity of the infraction.*

*Inappropriate language and violence will not be tolerated and will result in immediate disciplinary action*